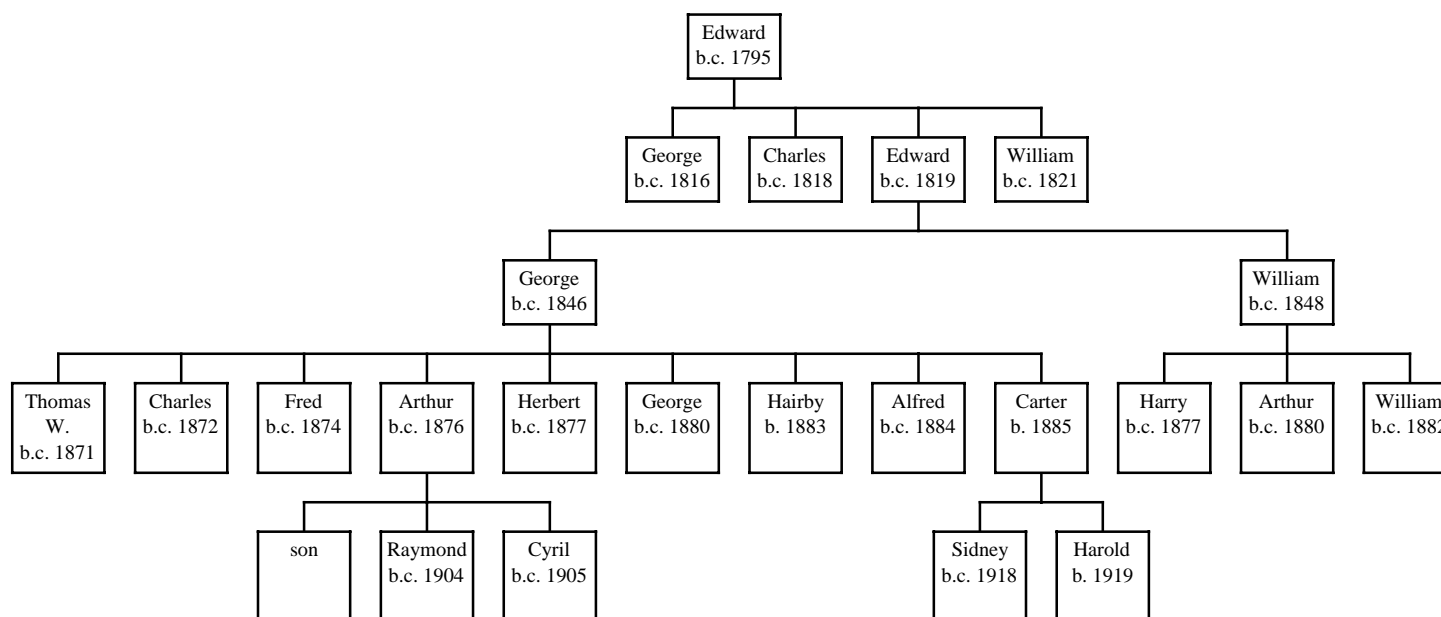


Descendants of Edward Graves and Susan ----- of South Ormsby and Aby, Lincolnshire, England (Gen. 980)

(Rev. 17 Dec. 2009)



NOTES: This chart shows male lines of descent only, since the focus is on using Y-DNA analysis to trace the Graves surname. The one exception to that is when the surname is continued through the female, usually as a result of having a child outside of marriage. When that happens, the surname continues but the male children do not have the Y-DNA of the Graves or Greaves family, and are essentially starting a new Graves/Greaves Y-DNA lineage. The number in each bottom colored box is the DNA test ID. When two descendants of a common ancestor have exactly the same DNA test results, it is assumed that the common ancestor also had that result, and all boxes up to and including the common ancestor have been given the same color. All boxes with the same color have the same DNA test results. 24 of 25 means that 24 of the 25 markers matched the inferred ancestral haplotype. A notation like 13-19 indicates a mutation from the ancestral haplotype, and means marker 13 had a value of 19.