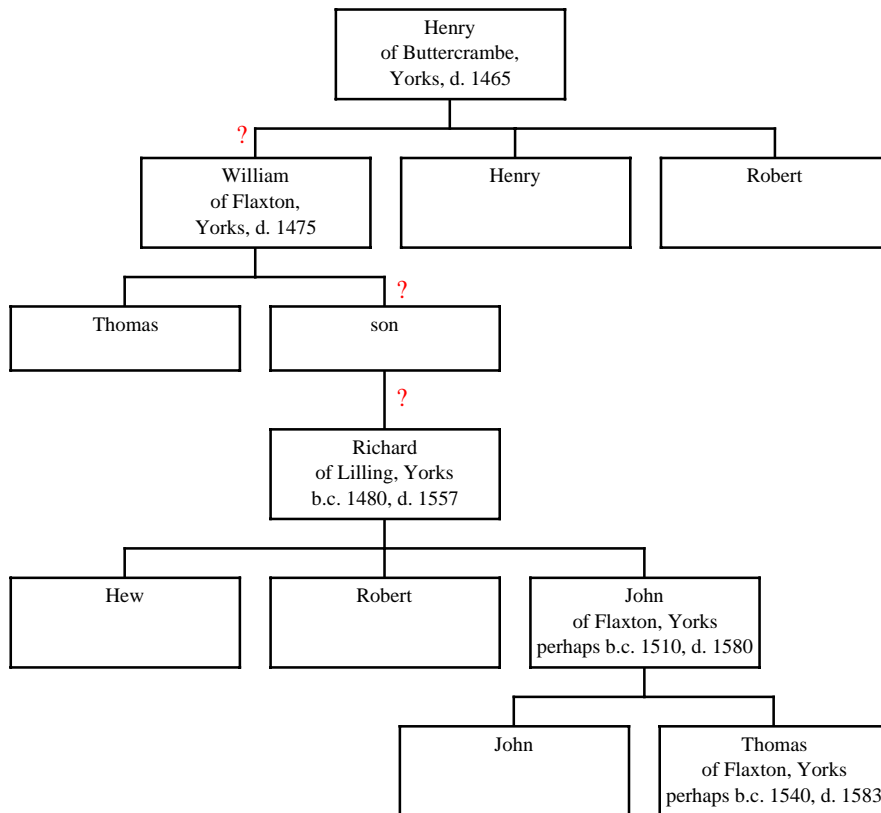


Descendants of Richard Grave and Isabel ----- of Lilling, Yorkshire, England, and Possible Ancestry (Gen. 759)

(Rev. 16 Sept. 2005)



NOTES: This chart shows male lines of descent only, since the focus is on using Y-DNA analysis to trace the Graves surname.

DNA test participants are needed to help connect this family to others.