

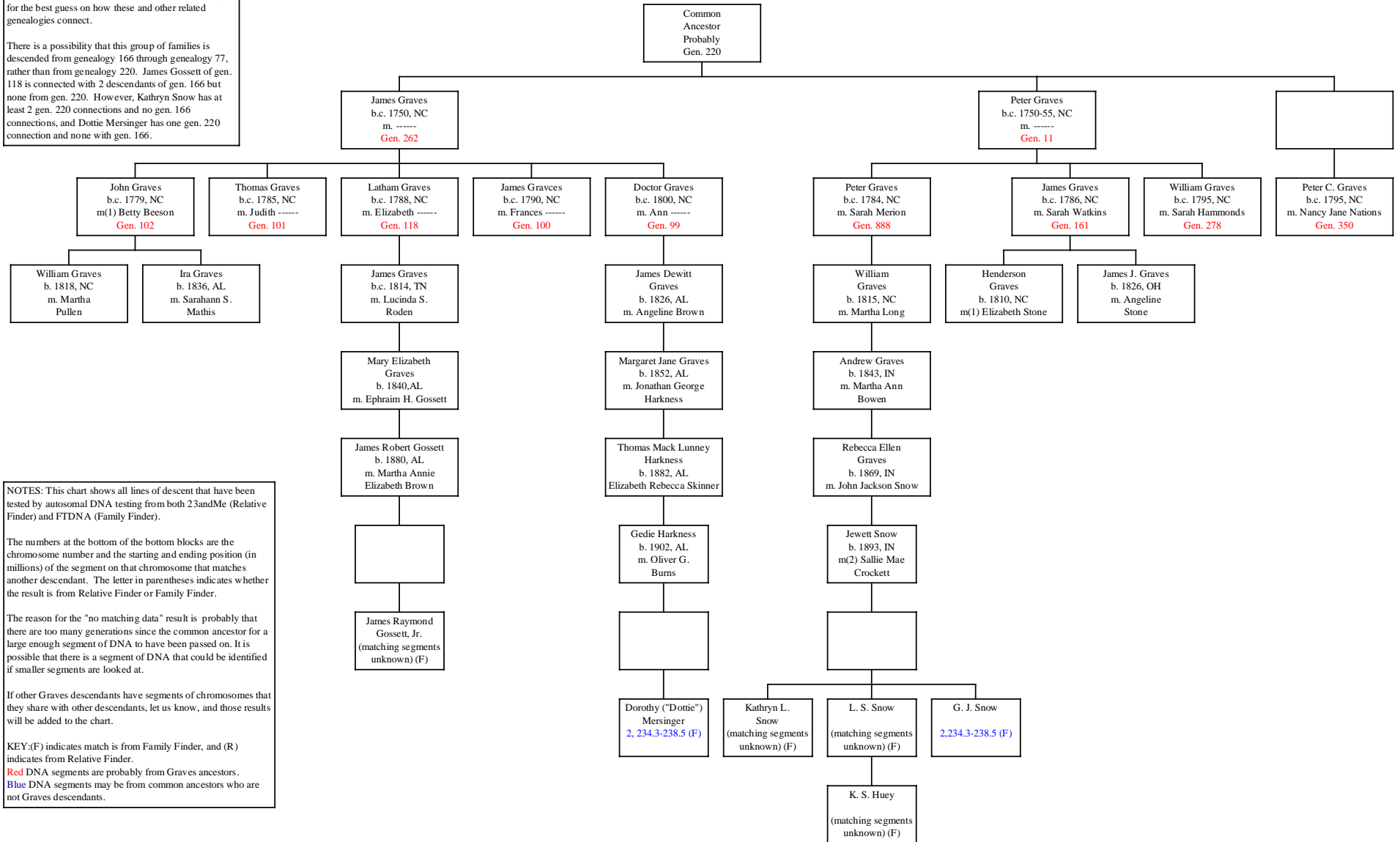
Summary Chart for Some Graves Families of Randolph Co. & Surry Co., NC,  
including gen. 11, 161, 262, 278, 350, and 888

**Autosomal DNA Testing**

(Rev. 15 Aug. 2013)

See the summary chart at  
<http://www.gravesfa.org/DNAchart228-connections.pdf>  
for the best guess on how these and other related  
genealogies connect.

There is a possibility that this group of families is  
descended from genealogy 166 through genealogy 77,  
rather than from genealogy 220. James Gossett of gen.  
118 is connected with 2 descendants of gen. 166 but  
none from gen. 220. However, Kathryn Snow has at  
least 2 gen. 220 connections and no gen. 166  
connections, and Dottie Mersinger has one gen. 220  
connection and none with gen. 166.



NOTES: This chart shows all lines of descent that have been tested by autosomal DNA testing from both 23andMe (Relative Finder) and FTDNA (Family Finder).

The numbers at the bottom of the bottom blocks are the chromosome number and the starting and ending position (in millions) of the segment on that chromosome that matches another descendant. The letter in parentheses indicates whether the result is from Relative Finder or Family Finder.

The reason for the "no matching data" result is probably that there are too many generations since the common ancestor for a large enough segment of DNA to have been passed on. It is possible that there is a segment of DNA that could be identified if smaller segments are looked at.

If other Graves descendants have segments of chromosomes that they share with other descendants, let us know, and those results will be added to the chart.

KEY:(F) indicates match is from Family Finder, and (R) indicates from Relative Finder.  
Red DNA segments are probably from Graves ancestors.  
Blue DNA segments may be from common ancestors who are not Graves descendants.