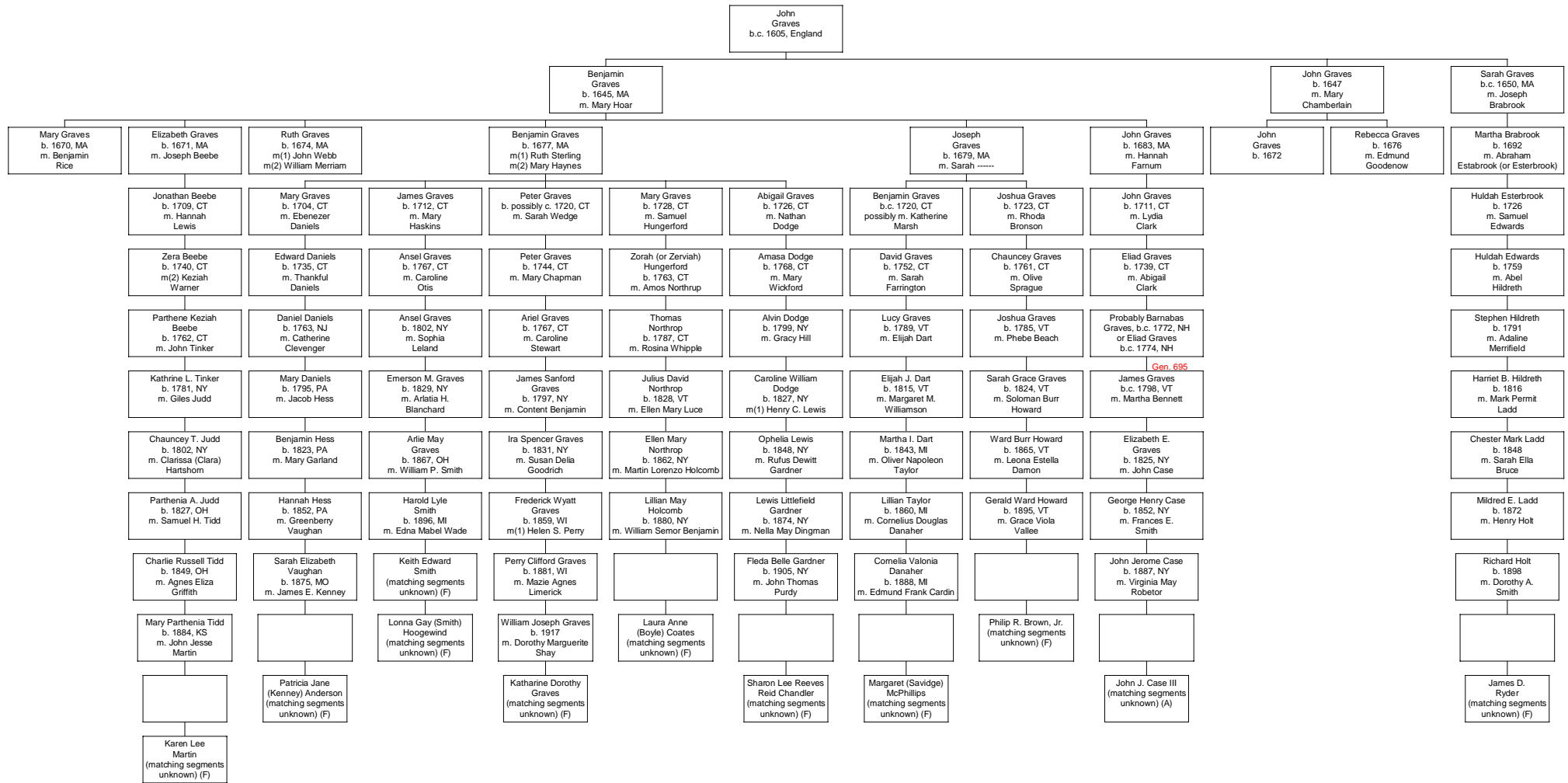


Descendants of John Graves of Concord, MA (Gen. 166)

Autosomal DNA Testing

(Rev. 1 April 2013)



NOTES: This chart shows all lines of descent that have been tested by autosomal DNA testing from 23andMe (Relative Finder), FTDNA (Family Finder), and Ancestry.com (AncestryDNA).

The numbers at the bottom of the bottom blocks are the chromosome number and the starting and ending position (in millions) of the segment on that chromosome that matches another descendant. The letter in parentheses indicates whether the result is from Relative Finder or Family Finder.

The reason for the "no matching data" result is probably that there are too many generations since the common ancestor for a large enough segment of DNA to have been passed on. It is possible that there is a segment of DNA that could be identified if smaller segments are looked at.

If other Graves descendants have segments of chromosomes that they share with other descendants, let us know, and those results will be added to the chart.

KEY: (F) indicates match is from Family Finder, (R) indicates from Relative Finder, and (A) is from AncestryDNA.

Red DNA segments are probably from Graves ancestors
 Blue DNA segments may be from common ancestors who are not Graves descendants.