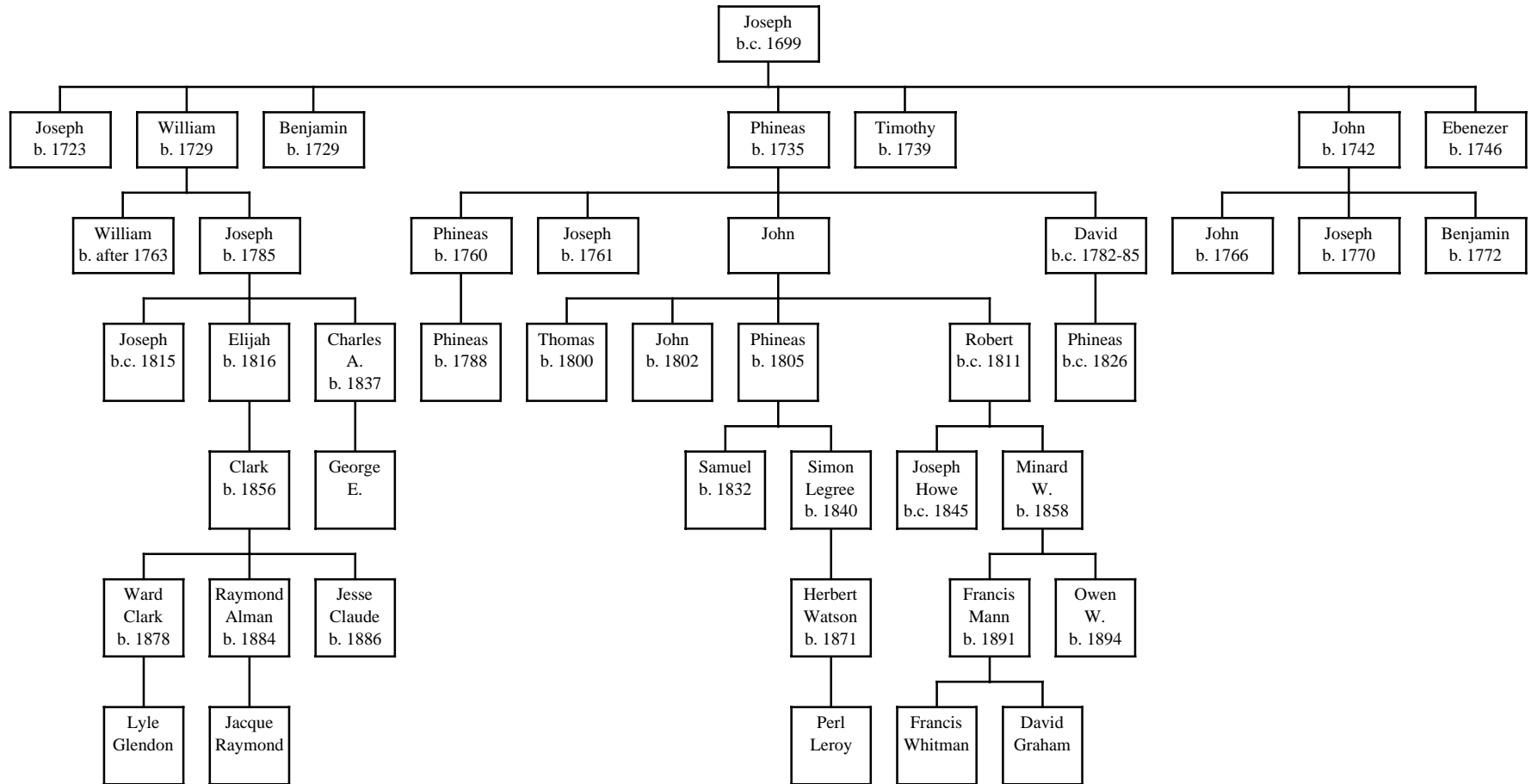


Descendants of Joseph Graves and Rachel Pratt of Framingham, MA (Gen. 133)

(Rev. 14 Dec. 2005)



NOTES: This chart shows male lines of descent only, since the focus is on using Y-DNA analysis to trace the Graves surname.

When there are descendants who participate in the DNA study, the following statements will apply.

The number in each bottom colored box is the DNA test ID. When two descendants of a common ancestor have exactly the same DNA test results, it is assumed that the common ancestor also had that result, and all boxes up to and including the common ancestor have been given the same color.

All boxes with the same color have the same DNA test results.

24 of 25 means that 24 of the 25 DNA markers matched the inferred ancestral haplotype.

A notation like 13-19 indicates a mutation from the ancestral haplotype, and means marker 13 had a value of 19.

It is possible that Lt. William Graves (genealogy 238) was descended from this family. It is also possible that Joseph Graves of this family was descended from Rear Admiral Thomas Graves of Charlestown, MA (genealogy 28).