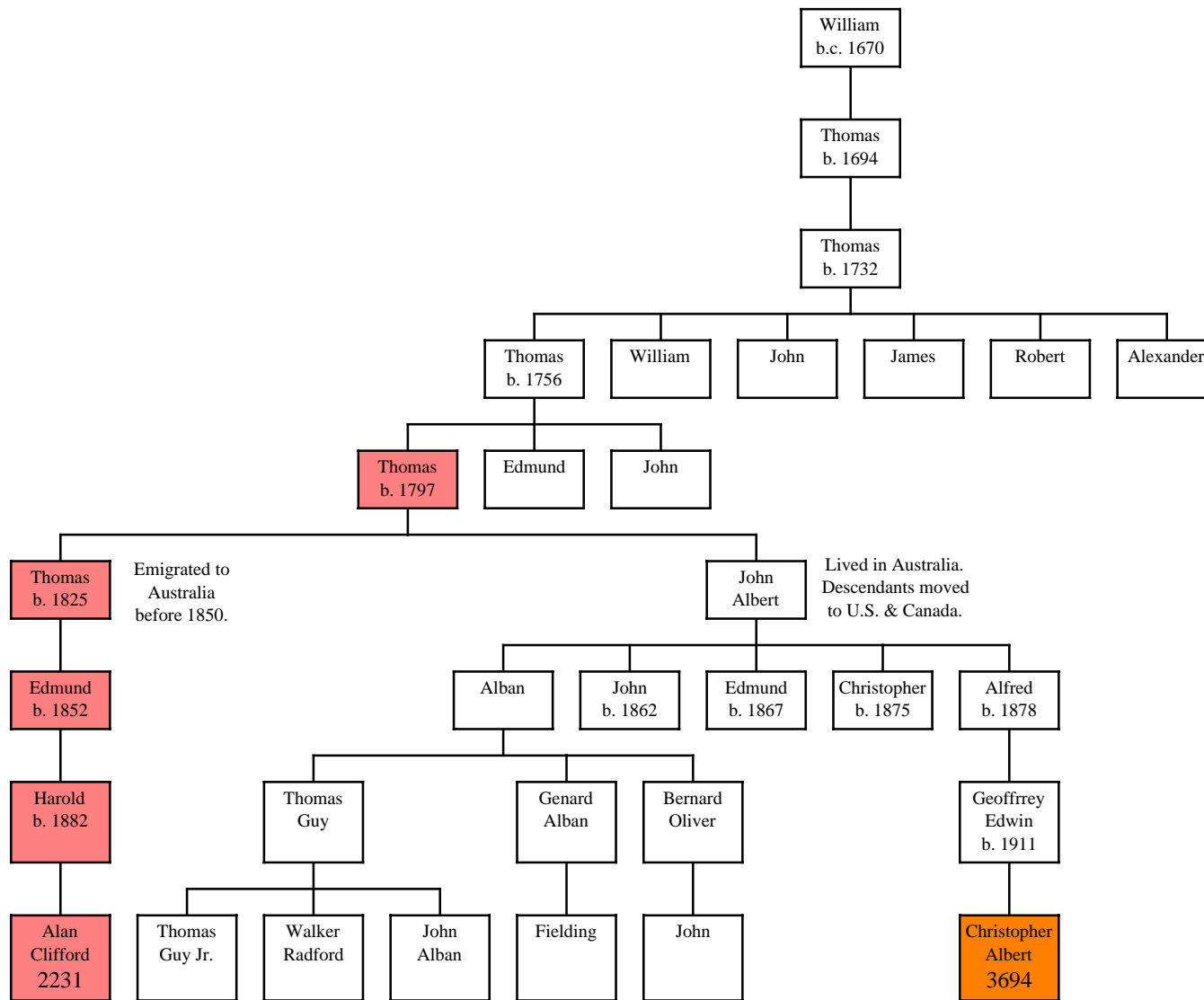


Descendants of William Greaves and Susanna ----- of Whitfield, Northamptonshire, England (Gen. 47) (Rev. 24 Dec. 2007)



35 of 37
5-12
35-39

63 of 67
5-12
26-11
35-39
55-15

NOTES: This chart shows male lines of descent only, since the focus is on using Y-DNA analysis to trace the Graves surname. The number in each bottom colored box is the DNA test ID. All boxes with the same color have the same DNA test results. 24 of 25 means that 24 of the 25 DNA markers matched the inferred ancestral haplotype. A notation like 13-19 indicates a mutation from the ancestral haplotype, and means marker 13 had a value of 19.

This genealogy is (based on DNA test results) closely related to one of the branches of the descendants of Capt. Thomas Graves of VA (genealogy 169). It matches 24 of 25 and 35 of 37 the line Thomas1, John2, Thomas3, John4.