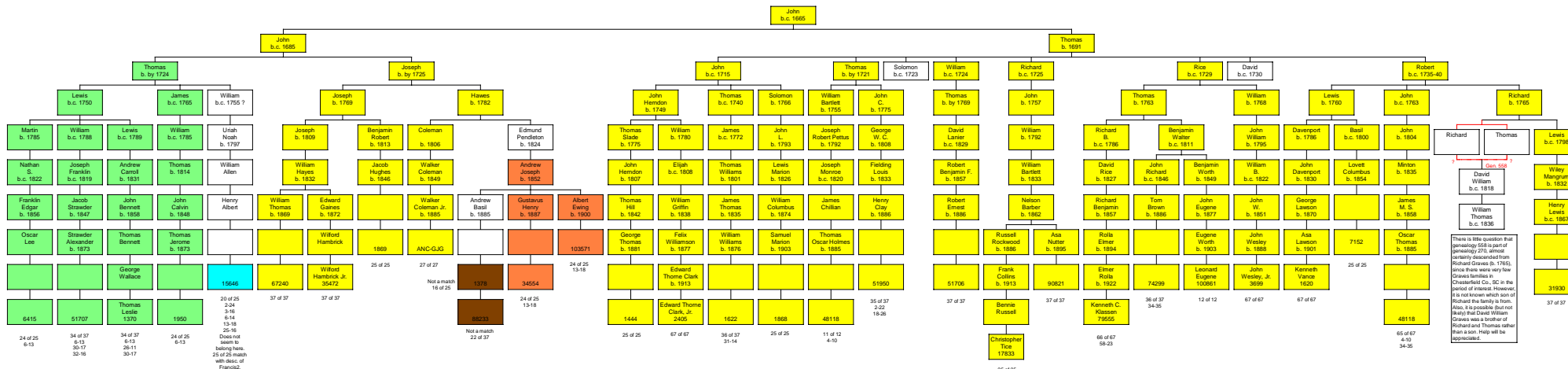


Descendants of John Graves/Greaves of Northamptonshire, England and Virginia (Gen. 270)

(Rev. 28 Oct. 2011)



There is the suggestion that genealogy 558 is part of genealogy 270, almost certainly descended from Richard Greaves (b. 1765) since the wife was very low Greaves family in Chesterfield Co., SC in the period of interest. However, it is not known which son of Richard the family is from. Also, it is possible that not Bailey but David William Greaves was a brother of Richard and Thomas rather than a son. Help will be appreciated.

NOTES: This chart shows male lines of descent only. The number in each bottom colored box is the DNA test ID.
 24 of 25 means that 24 of the 25 DNA markers matched the inferred ancestral haplotype.
 13-19 indicates a mutation from the ancestral haplotype, and means marker 13 had a value of 19.
 The colors of the blocks indicate from a common ancestor. All the blocks that are colored yellow, green or salmon have been verified by DNA testing to descend from the common ancestor. In addition, the green blocks indicate descent from the earliest haplotype, and the salmon blocks indicate descent from the earliest haplotype. The blue and brown samples are not descended from the common Graves ancestor by the male line (although they may be descended through a female connection).
 All those tested need to upgrade to at least 37 markers and preferably to 67 markers. As those expanded results are available, they will be posted on this and other charts, and colors of boxes will eventually be changed to reflect the more complete information.
 This family was previously believed to descend from Capt. Thomas Graves (genealogy 169). However, it was determined by DNA testing that the descendants traditionally attributed to Capt. Thomas Graves actually consisted of 4 separate Graves families descended from 4 separate ancestors. The ancestral haplotype of this family group (genealogy 270) is a 24 of 25 match with genealogy 47 (Thomas Greaves and Joan — of Northamptonshire & Buckinghamshire, England).
 There are several Graves descendants who have taken the DNA test and belong in this part of the family, but whose connection has not yet been found. These lines include: (1) Joseph, James Chatham, William B., John W. (test ID 3699), now placed as a descendant of Thomas, son of Thomas (genealogy 169) but almost certainly a descendant of John 1st, John 2d, Joseph 3d, Joseph 4 (same as test ID's 1889 and 35472); (2) Newton P. Graves of AL & LA (genealogy 172); (3) Elijah Greaves and Agnes Lacy of KY (genealogy 443); (4) Lewis P. Graves and Mary Prudence Masterson of AL & LA (genealogy 741); (5) Samuel Graves and Eleanor Wilson of NC, SC & TN (genealogy 877); and John Graves and Nannetta, — of NC & Giles Co., TN (genealogy 525).