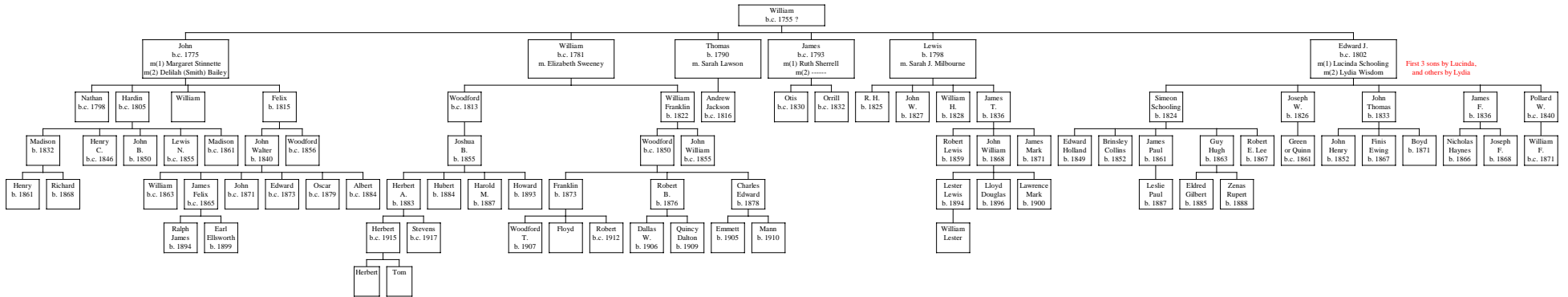


Descendants of William Graves and Sarah Fisher of VA (Presently in Gen. 270 but perhaps belonging in Gen. 94)

(Rev. 22 March 2011)



The purpose of this chart is to try to help identify the descendant that do not belong in genealogy 270 and should be in genealogy 94. Possible siblings of the children of William Graves that have already been moved to genealogy 94 are Thomas Sims Graves and Uriah Noah Graves, based on Y-DNA testing of their descendants.

NOTES: This chart shows male lines of descent only, since the focus is on using Y-DNA analysis to trace the Graves surname. The number in each bottom colored box is the DNA test ID. All boxes with the same color have the same DNA test results. 24 of 25 means that 24 of the 25 DNA markers matched the inferred ancestral haplotype. A notation like 13-19 indicates a mutation from the ancestral haplotype, and means marker 13 had a value of 19.