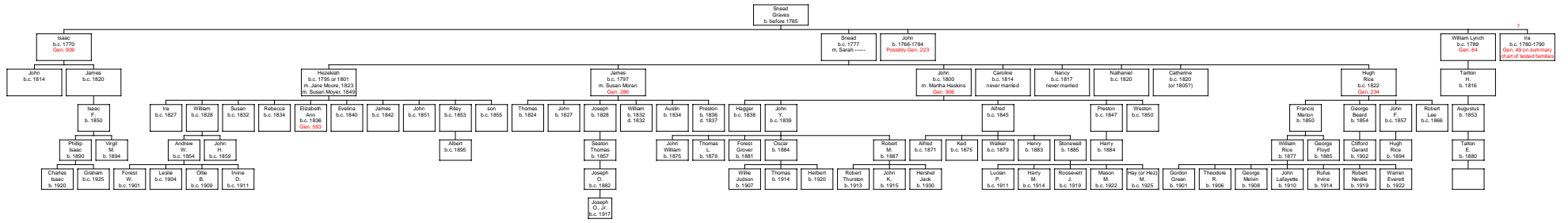


Graves Family of Nelson Co. & Albemarle Co., VA
Possibly Descended from Snead Graves
(Rev. 6 Dec. 2007)



It is not known for certain whether Nathaniel, Hugh Rice and Catherine were children of Snead Graves or of Hezekiah Graves. They have been shown as children of Snead Graves because that seems more likely since Hezekiah did not marry until 1823. Also, Nathaniel, Catherine and Nancy were living with Snead's widow Sarah in the 1850 census for Albemarle Co., VA.

In most cases, only the male line has been carried down, because that is the line that needs a male descendant with the Graves surname to take the Y-DNA test.